





Situated in the sought-after village of Southbourne, this charming three-bedroom period home with a LARGE PLOT is perfectly positioned within easy walking distance of the picturesque Prinsted shoreline, local shops and a traditional village pub. Offering a wealth of character and original features throughout, this delightful property presents a fantastic opportunity for buyers seeking a home with charm, space and potential.

The ground floor welcomes you with a warm and inviting atmosphere, enhanced by period details including sash windows, picture rails, decorative ceiling roses and high skirting boards. There are two separate reception rooms, both centred around attractive wood-burning stoves, providing excellent spaces for relaxing and entertaining. To the rear, the kitchen opens through to an additional reception room which could serve as a breakfast room, home office, playroom or snug depending on individual requirements.

Upstairs, the property offers three well-proportioned double bedrooms along with a family bathroom. The accommodation is spacious throughout and provides excellent scope for modernisation, allowing a new owner to create a home tailored to their own taste and lifestyle while retaining the property's original character.

Outside, the generous rear garden is predominantly laid to lawn and bordered by mature shrubs and planting, creating a private and peaceful setting. Nestled away from the main road in the heart of Southbourne, this attractive home combines period charm with an enviable coastal location, making it an excellent opportunity for families, downsizers and those looking to enjoy village life close to the water.

- PERIOD CHARACTER HOME
 - THREE DOUBLE BEDROOMS
- HEART OF SOUTHBOURNE
- WOOD BURNING STOVES
 - ORIGINAL PERIOD FEATURES
- GENEROUS REAR GARDEN
 - SASH WINDOWS THROUGHOUT
- WALK TO PRINSTED SHORELINE
 - MODERNISATION POTENTIAL
- COASTAL LIFESTYLE LOCATION

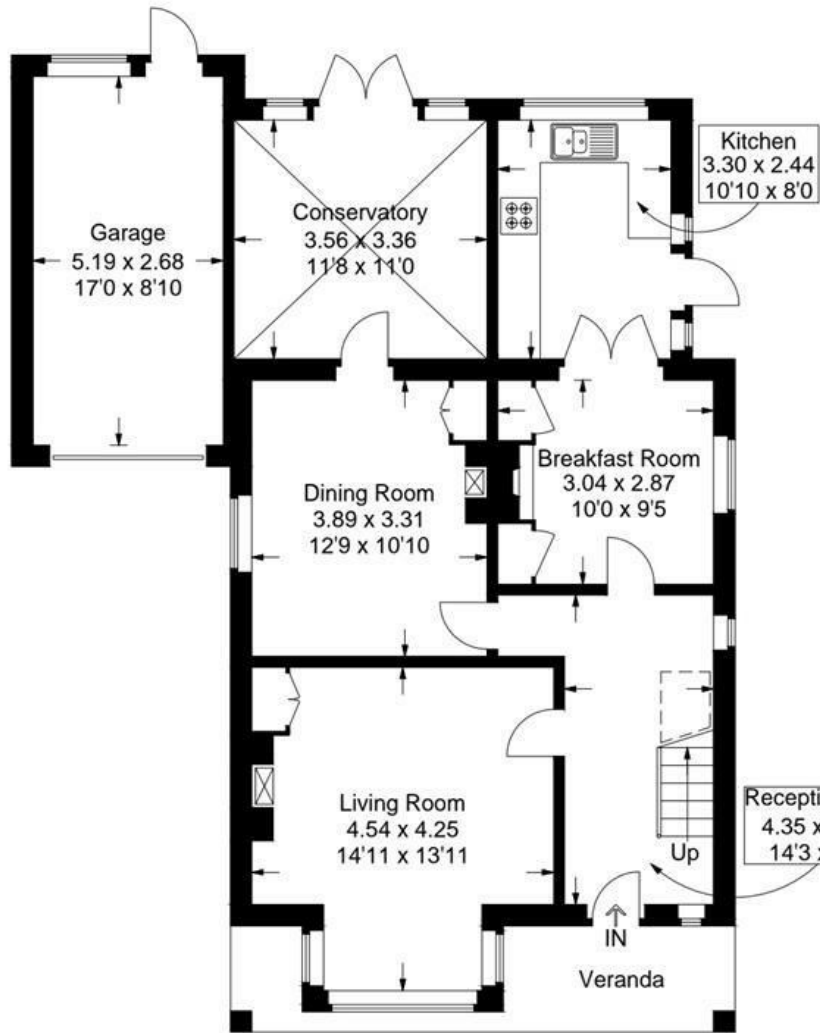


Main Road, Southbourne

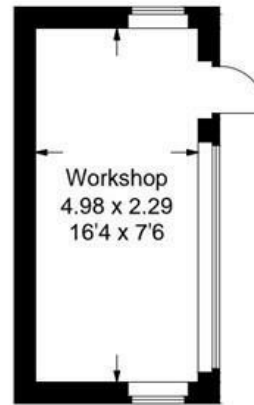
Approximate Gross Internal Area = 122 sq m / 1313 sq ft

Outbuilding = 11.5 sq m / 124 sq ft

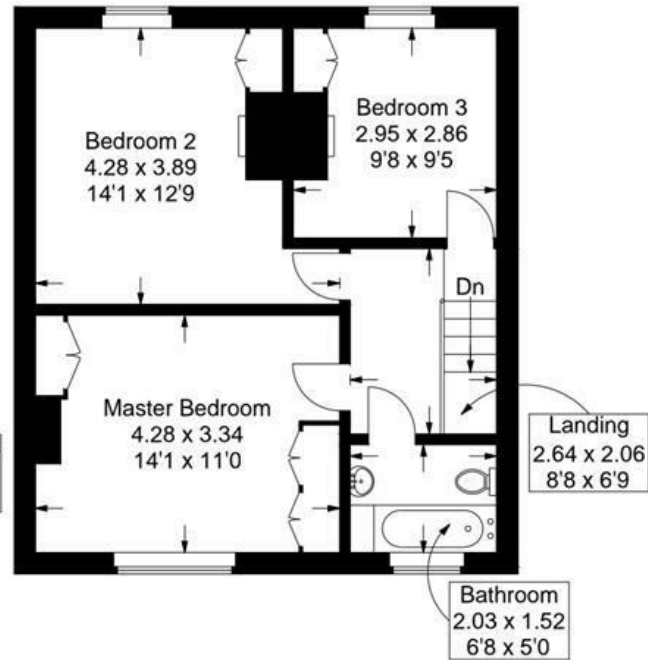
Total = 133.5 sq m / 1437 sq ft




Ground Floor



Outbuilding



First Floor

 = Reduced headroom below 1.5m / 5'0

This plan is for layout guidance only. Not drawn to scale unless stated. Windows and door openings are approximate. Whilst every care is taken in the preparation of this plan, please check all dimensions, shapes and compass bearings before making any decisions reliant upon them.